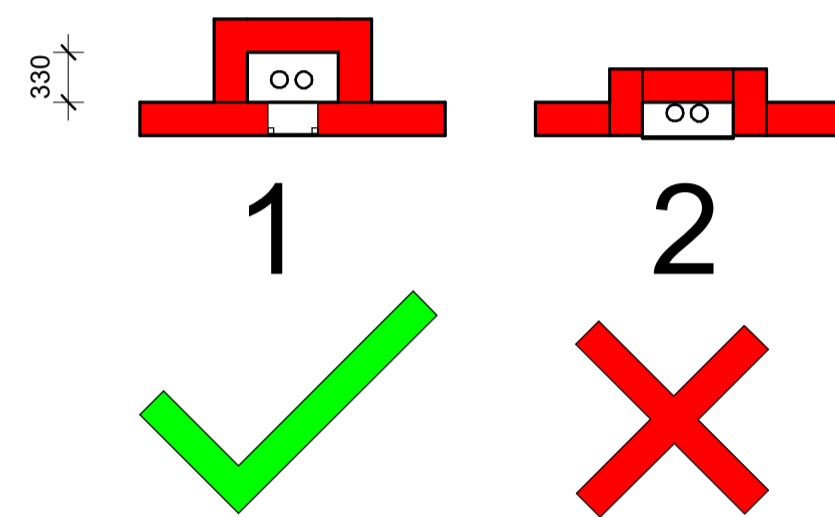
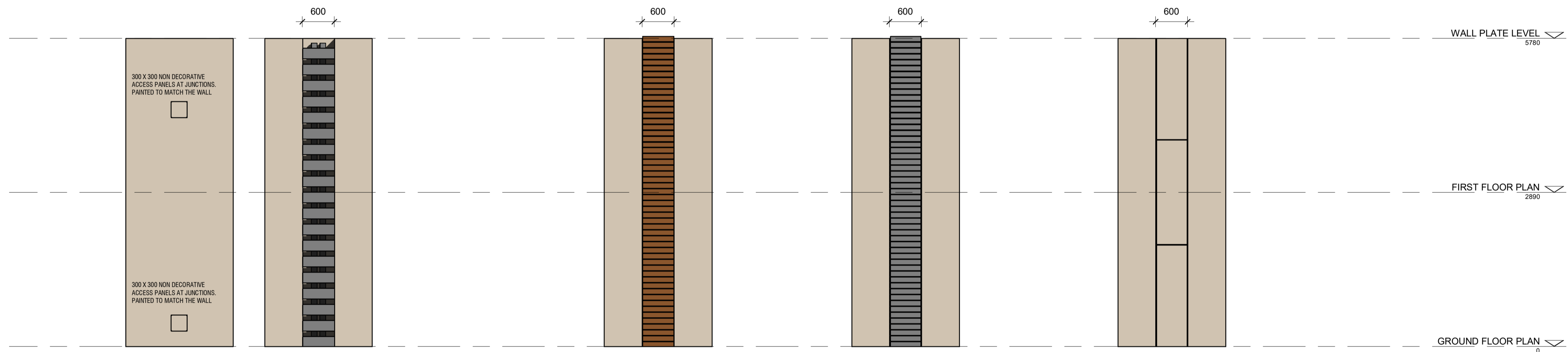


21. EXTERNAL PIPES, FITTINGS, FIXTURES & DEVICES

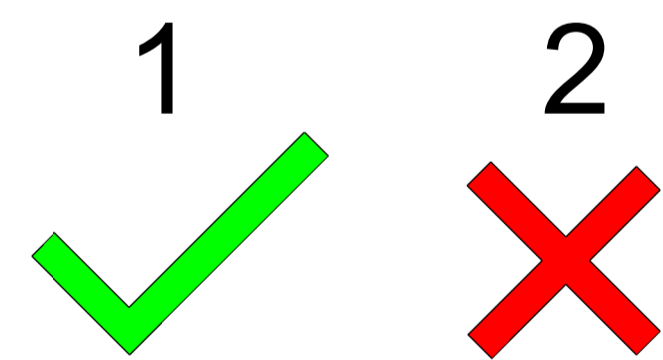
All Plumbing is to be bricked in and made flush against the external wall, with access panels only at the junctions. Access panels must be approximately 300 x 300mm in size and painted to match the house.



DETAILED PLAN VIEW
SCALE 1:50



DETAILED ELEVATION VIEW
SCALE 1:50



OPTION 1
IF YOU HAVE EXISTING TIMBER CLADDING ON THE HOUSE
HORIZONTAL MERANTI TIMBER COVER WITH 10MM SPACING FLUSH WITH WALL.

OPTION 2
IF YOU HAVE EXISTING DARK ROOF AND/OR WINDOW FRAMES
HORIZONTAL ALUMINIUM COVER WITH 10MM SPACING FLUSH WITH WALL.

OPTION 3
ONLY IF OPTION 1 OR 2 IS NOT POSSIBLE
SOLID FIBRE VEMENT BOARD COVERS, FLUSH WITH WALL.

THE HILLS

PROPOSED DUCT SCREEN ALTERNATIVES



studious
architects

Derick Britz Gauteng Tel: 012 - 663 3371
082 415 9981 P.O. Box 9239 Fax: 086 590 5805
Centurion 0046